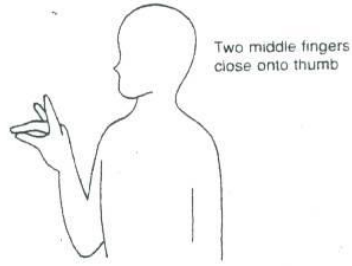
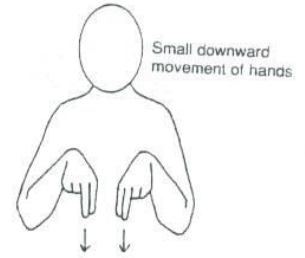


ANIMALS

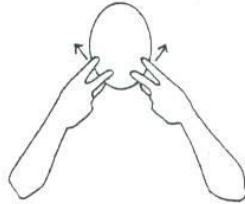
**ANIMAL
(General)**



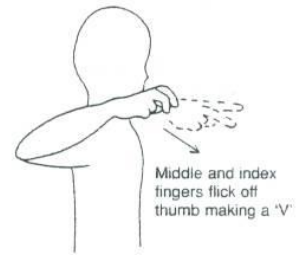
DOG



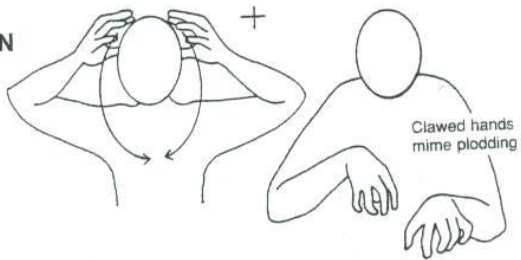
CAT



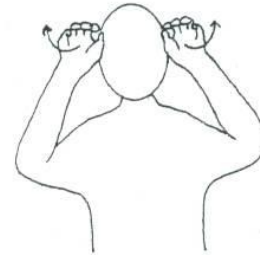
SNAKE



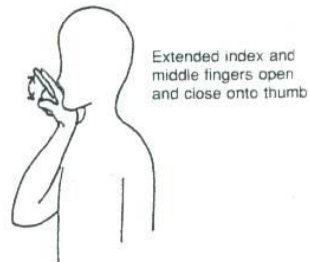
LION



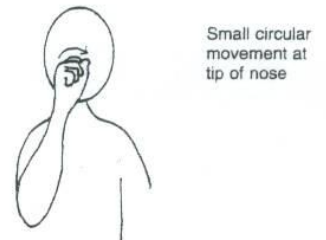
COW



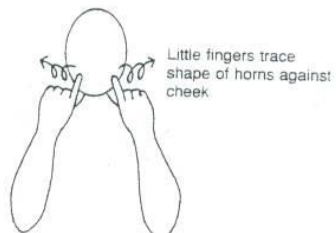
DUCK



PIG



SHEEP



ELEPHANT

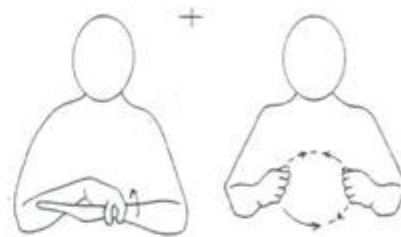


TRANSPORT AND VEHICLES

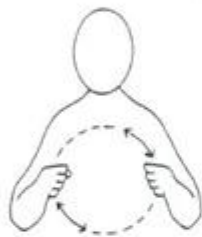
CAR



POLICE CAR



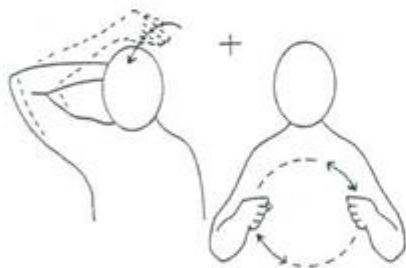
BUS/COACH/
LORRY/
TRUCK



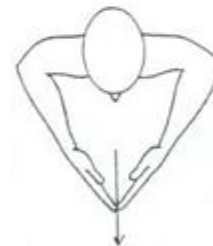
AEROPLANE



FIRE ENGINE



BOAT



TO WALK



TRAIN



TO RUN



BICYCLE



GENERAL VOCABULARY

MORE



Flat hand, palm down, covers top of other fist

THANK YOU



GOOD



Use both hands for "VERY GOOD"

HELLO/HI



Make sign at shoulder height

BAD/NAUGHTY



Use both hands for "VERY BAD". Make two small forward movements for "NAUGHTY"

GOOD MORNING



Touch chest with fingertips

YES



Bend wrist

GOODBYE



Wave hand

NO



AGAIN

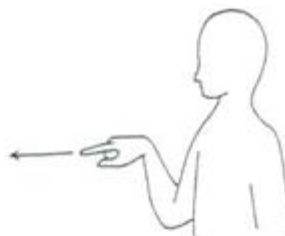


Deliberate quick downward movement

PLEASE



TO GO



FOOD

ICE CREAM



Mime licking ice cream

PLATE



TOMATO



Twist stalk from tomato

CUP



EGG



Small quick downward movement of middle + index fingers. Stop movements just above other fist, without touching

CRISPS



Mime opening packet and taking crisps to mouth

CAKE



APPLE



Take apple to mouth and mime biting it

JUICE



ORANGE



Squeeze orange at corner of mouth

SPOON



BANANA



Mime peeling banana